

Grapevine Nursery Stock Certification Program Meeting

September 20, 2022, 9 am to 11 am



1

Meeting Agenda



- Welcome & Introductions
- Background: Grapevine quarantines and certification in Oregon
- Clean Plant Center Northwest update – Scott Harper
- Updates to Oregon’s Grapevine Nursery Stock Certification Program – a review of the standards, applicant requirements, and processes
- Question and Answer period



2

Updating Oregon's Grapevine Quarantine

- Multi-year project to update grapevine quarantines and certification programs between Oregon, Washington, and Idaho to harmonize standards and requirements.
 - Idaho's quarantine update effective March 20, 2020
 - Washington's quarantine update effective February 12, 2021
 - Oregon's quarantine update effective April 1, 2021
- Industry requested stricter testing requirements for *Vitis* spp. material entering Oregon due to concerns about infected material and spread of disease.
- Move towards requirement for all *Vitis* spp. material entering Oregon to originate from a certification program.

More information available at www.oda.direct/GrapeQuarantine



3

Summary of Changes (OAR 603-052-0051)

- **Housekeeping Changes**
 - Updated disease name – Grapevine corky bark disease agent changed to *Grapevine virus A* and *Grapevine virus B*
 - Clarifies commodities and plant parts covered by quarantine
 - Updates references to other Oregon statutes and rules
- **Allows for shipment of field-grown bareroot plants without a permit**
 - Describes treatment and certification requirements
- **Adds *Xiphinema index* to quarantine**
- ***Xylella fastidiosa* Testing**
 - Simplifies sampling and testing requirements
 - Adds exemption for material from Xf-free areas
- **New Testing Requirements**
 - All non-certified *Vitis* for propagation must be derived from tested mother vines by September 1, 2021:
 - *Grapevine red blotch virus*
 - Grapevine leafroll-associated virus 3
- **Certification Program Origin**
 - Requires all *Vitis* for propagation to originate from an approved certification program by 2023
- ***Vitis* spp. seeds for sowing**
 - Originate from plants tested and found free of nepoviruses or from plants grown in areas known to be free from nepoviruses.
- **Phytosanitary Certificates**
 - Updates language to reflect new treatment and testing requirements established by the rule change.

Full summary handout available at www.oda.direct/GrapeQuarantine



4

New Grapevine Red Blotch virus and Grapevine Leafroll-associated virus 3 Sampling & Testing Requirements

- *Vitis* spp. plants and plant parts intended for planting, including cuttings, bare-root plants, and rooted plants.
- **Effective September 1, 2021.** Only applies to plant material that does not originate from a certification program.
- **Sampling:**
 - Mother vines must be tested within one year of shipment date.
- **Testing:**
 - Approved laboratories will be identified by the department.
 - Samples from up to 10 individual plants may be pooled per test.
- Phytosanitary certificate must certify testing status.



5

Certification Program Requirement starting January 1, 2023

- All *Vitis* spp. plants and plant parts intended for planting or propagation, including cuttings, bare-root plants, and rooted plants entering Oregon, **starting in 2023**, must originate from a certification program approved by the Department.
 - California and Washington programs are approved.
- The certification program must, at a minimum, test for the following pathogens:
 - *Grapevine fanleaf virus*, *Grapevine leaf roll-associated viruses*, *Grapevine virus A*, *Grapevine virus B*, *Grapevine red blotch virus*, and *Xylella fastidiosa*.



6

Updating Oregon's Grapevine Certification Program

- OAR 603-051-0830 to 0850 – last updated in 1999
- Standards have been developed as part of the tri-state quarantine harmonization project – these will be discussed in the latter half of this presentation
- Will modernize Oregon's program and bring it in line with California and Washington's programs
- Plan to undergo rulemaking in 2023



7

Clean Plant Center Northwest Update



8



Grapevine Nursery Stock Certification Program

Standards, Requirements, and Application Process

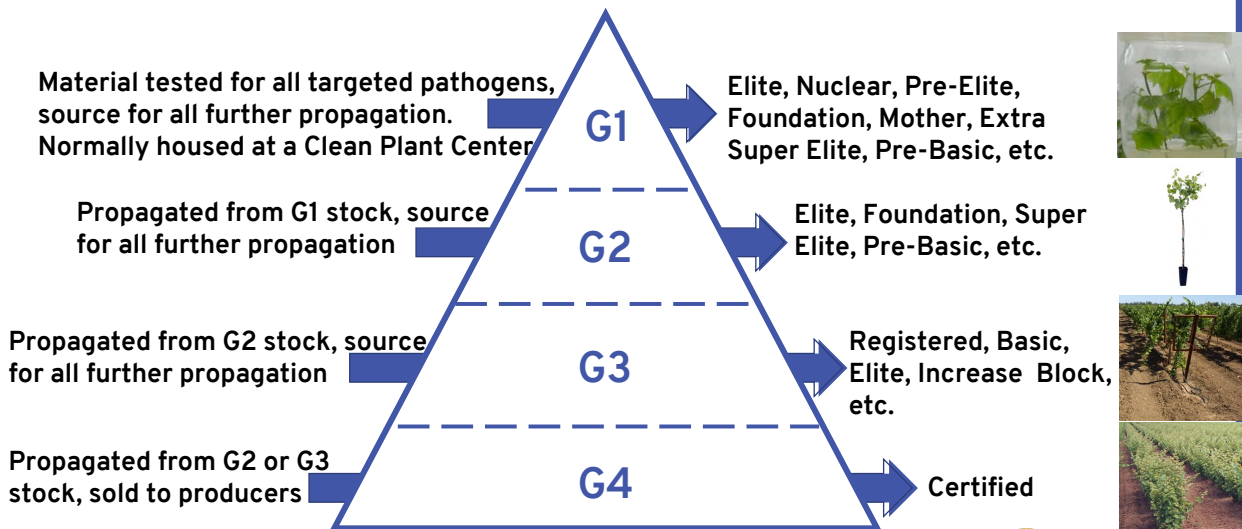
September 20, 2022

Dipak Poudyal | Dipak.Poudyal@oda.oregon.gov
 Plant Health Virus Certification Program Lead
 Plant Health Program



9

Generation or "G" Levels




G1 Material tested for all targeted pathogens, source for all further propagation. Normally housed at a Clean Plant Center. Elite, Nuclear, Pre-Elite, Foundation, Mother, Extra Super Elite, Pre-Basic, etc.

G2 Propagated from G1 stock, source for all further propagation. Elite, Foundation, Super Elite, Pre-Basic, etc.

G3 Propagated from G2 stock, source for all further propagation. Registered, Basic, Elite, Increase Block, etc.

G4 Propagated from G2 or G3 stock, sold to producers. Certified

Adapted from Gergerich et al., 2015



10

Certification Programs

Certified plant material has been subjected to a comprehensive process established, authorized, and performed by a state or other governmental entity to minimize the occurrence of regulated pests and diseases in planting stock.

State level certification focuses on testing for graft transmissible or systemic pathogens such as viruses.

G1 material

- Maintained at Clean Plant Centers

G2 and G3 registered plants

- At nurseries in approved sites
- Can be increased at approved sites
- Best management practices required

G4 certified plants

- Sold to end consumer

State certification programs audit, monitor, and test G2, G3, and G4 blocks and nursery stock.

National Clean Plant Network Centers

G1

G2/G3

G4

11

Current Status of Grapevine Certification Program

- Program began in 1970
- Updated in 1999
- 14 Nurseries:
 - Apical Vines Nursery
 - Bailey Nurseries
 - Brigadoon Vineyards
 - Cole Family Vineyards
 - Countryside Nursery
 - Cutting Edge Grapevines
 - Ethell Development Co.
 - King Estate Vineyards
 - Kraemer's Nursery Inc.
 - Melrose Vineyards
 - Meyer Nursery & Orchard
 - Northwoods Nursery
 - Plaisance Viticulture
 - Weeks Berry Nursery

12

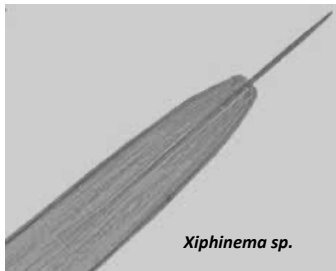
Current Standards vs. Updated Standards

Standards	Current	Updated
Approved sources for registered materials	Yes	Yes, definition of approved has been clarified
Mother plants	Elite stocks and Registered stocks	G2 and G3
Registered block	Increase block	G2 and G3 blocks
Registration numbers	Yes	Yes
Planting sites	Field	Field, Containers, Screenhouse, Greenhouse, Tissue Culture
Best management practices	Yes	Yes, more detail and specific
Eligibility of field: Soil-borne diseases/pests	Implied	Mandatory for field-grown and soil; Exceptions: soil-less media and tissue culture
Field: isolation distance from uncertified or wild <i>Vitis</i> spp.	30 ft	100 ft
Broad-leaf weeds and other hosts	Implied	Details with buffer zone
Nursery inventory & map	Yes	Yes
Inspection	Yes (does not specify time or frequency)	G2 and G3: Twice per year G4: Once per year, during growing season
Mandatory testing for viruses	Implied	G2 and G3: Mandatory G4: symptomatic plants
Level one vs level two stock based on virus incidence	Yes	No
Certification tags	Yes	Yes
Record keeping and documentation	Yes	Yes

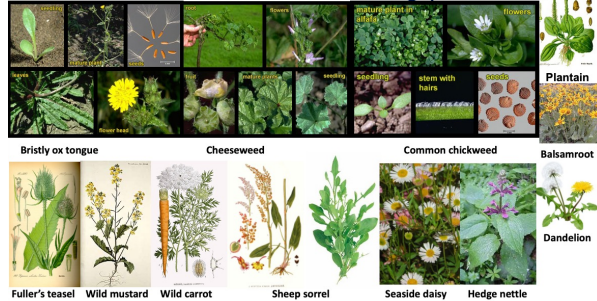
13

Planting Site Standards

Standards	Current	Updated
Planting sites	Field	Field, Containers, Screenhouse, Greenhouse, Tissue Culture
Eligibility of field: Soil-borne diseases/pests	Implied	Mandatory for field-grown and soil; Exceptions: soil-less media and tissue culture
Field: isolation distance from uncertified or wild <i>Vitis</i> spp.	30 ft for G2 and G3	G2 and G3: 100 ft G4: 30 ft
Broad-leaf weeds and other hosts	Implied	30 ft



Common weed hosts of Tomato ringspot virus



14

Inspection, Sampling, and Testing Standards

Standards	Current	Updated
Inspection	Yes (does not specify time or frequency)	G2 and G3: Twice per year G4: Once per year, during growing season
Mandatory testing for viruses	Implied	G2 and G3: Mandatory G4: symptomatic plants
Sampling plan	Not described	G2 and G3 (field or containers): Symptomatic cultivars: 95% confidence/5% detection level (ISPM 31) Asymptomatic cultivars: 5-year cycle (20% each year)
		G2 and G3 (screenhouse or tissue culture): 5-year cycle (20% each year)



Grapevine red blotch virus symptoms
Source: Bob Martin, USDA ARS



Xylella fastidiosa (Pierce's Disease) symptoms
Source: Mississippi Extension



Leaf roll-associated virus symptoms
Source: Jay Pscheidt, OSU



15

Documentation Standards



Standards	Current	Updated
Approved sources for registered materials	Yes	Yes; Approved Clean Plant Center (CPC) sources: Clean Plant Center Northwest Foundation Plant Services
Tags	Yes	Yes Registration tags for G2 and G3 plants Certified tags for G4 plants
Record keeping and documentation	Yes	Yes
Nursery inventory & map	Yes	Yes



16

Program Administration

Standards	Current	Updated
Annual Application	N/A	Yes January 31 st deadline
Program Fees	N/A	Application fee: \$200 Registered plant fee Testing fees (cost recovery)

Final fee structure is still to be determined – will be a combination of an application fee, administrative fees per registered plants, and fees to cover sampling and testing.

Oregon Blueberry Nursery Certification Registered Plant Fees

Number of G2/G3 Mother Plants	Cost per Plant
1-10 plants	\$100 per plant
11-50 plants	\$75 per plant
51-100 plants	\$50 per plant
>100 plants	\$37.50 per plant



17

Certification Program Process for 2022-2023

2022

- September 20th – Certification Program Meeting
- November 30th – Application packages sent out

2023

- January 31st– Applications due back to ODA
- February-April – ODA review of applications
- May-June – Spring inspections of registered sites (G2 and G3)
- June-July – Summer inspections of G4 certified sites and plants
- August-September – Sampling and second inspections of registered sites (G2 and G3)
- November – Annual meeting
- December – Issuance of Shipping Lists

Grapevine Certified Nursery Stock Program
Plant Health Program OS03 196-4420
635 Capitol Street NE Salem, OR 97301



Application for the Oregon Grapevine Certified Nursery Stock Program

The Oregon Department of Agriculture (ODA) is authorized under Oregon Revised Statute (ORS) 571.015 (b) to establish certification standards for nursery stock. The Grapevine Certified Nursery Stock Program includes the certification of commercially grown *Vitis* spp. including a rooted grape plant, rootstock, scion, and other intermediate source vine for nursery stocks.



**OREGON
DEPARTMENT OF
AGRICULTURE**

2022 OREGON CERTIFIED NURSERY STOCK
PROGRAM HANDBOOK



**OREGON
DEPARTMENT OF
AGRICULTURE**

18

Nursery Audit, Inspection, and Testing

- Registered sites and plants (G2 and G3)
 - Inspection:
 - Twice per year
 - Spring and late summer/early fall
 - All plants inspected
 - Sample collection and testing:
 - Late summer
- Certified sites and plants (G4)
 - Inspection:
 - At least once per year
 - Summer
 - Inspection at the lot level
 - Sample collection and testing:
 - Symptomatic plants only



OREGON DEPARTMENT OF AGRICULTURE
Protect. Promote. Prosper.

Grapevine Certified Nursery Stock Program
Audit and Inspection Form
635 Capitol Street NE Salem, OR 97301
503.986.4620 | oda.direct/PlantHealth

Inspection Summary

- Documentation related to certification and planting sites must be audited and inspected at least once a year as per the Grapevine Certified Nursery Stock Program's standards.
- Registered and certified nursery stocks in Grapevine Certified Nursery Stock Program and their buffer areas must be inspected at least twice annually during the early (spring) and late growing season (late summer or early fall) for the incidence and severity of grapevine pests and diseases.
- Any non-compliance issue must be documented and further investigated and resolved working together with the nursery.

Inspection of Pests, Diseases, and Best Management Practices

Observation	Site G level	Site G level	Site G level	Site G level	Site G level	Site G level
Insects:						
Mealybugs						
Leafhoppers						
Aphid						
Phylloxera						
Other						
Fungal diseases:						
Powdery mildew						
Drobnak						
Young vine decline						
Cane canker						
Leaf spot/signa						
Trunk disease						
Other						
Bacterial diseases:						
Crown gall						
Leaf blight						
Leaf scorch						
Viral diseases:						
All virus like symptoms						
Viral mixtures						
Bromelial weeds						
Non-certified grapevine and other hosts						
Bromelial weeds in a buffer area						
Non-certified grapevine and other hosts in a buffer area						
Any other non-compliance issues:						

Inspect each G2 and G3 plant. G4 plants may be inspected on a lot basis. Check appropriate boxes for preliminary diagnosis. See Comments.

19

Shipping List of Certified Cultivars

- Updated annually
- Issued in December based on previous year's inspection and testing
- Shipping list is for certified (G4) plants
- Not for registered (G2/G3) plants



Plant Health Program
635 Capitol Street NE
Salem, OR 97301
USA
503.986.4620 | oda.direct/PlantHealth

Oregon Certified Nursery Stock

The attached nursery stock is maintained and produced following the Oregon Certified Nursery Stock Program, a system-based approach to produce certified nursery stock, in compliance with requirements of ORS 571.015.



OREGON DEPARTMENT OF AGRICULTURE


Feb 1, 202X
From: Dipak Poudyal, PhD
Plant Health Virus Certification Program Lead
Plant Health Program

OREGON CERTIFIED NURSERY STOCKS AVAILABLE FOR SHIPMENT

GRAPEVINE NURSERY, Salem, Oregon has participated in the Oregon Grapevine Certified Nursery Stock Program and meet the program's requirements and regulations for the following certified nursery stocks. These grapevine (*Vitis* spp.) nursery stocks are eligible for Oregon Certification tags and shipment as of this date.

Beta	Himrod	Reliance Seedless
Bluebell	Kay Grey	Seyval Blanc
Canadice	La Crescent	ST Croix
Concord 9-33	Marechal	ST Theresa
Concord Seedless	Marquette	Summerset
Edelweiss	Osceola Muscat	Swenson Red
Frontenac Gris	Petite Jewel	Valiant


20



Questions? Please Contact Us

Dipak Poudyal, PhD
Plant Health Virus Certification Program Lead
503.986.4664 | Dipak.Poudyal@oda.oregon.gov

Elizabeth Savory, PhD
Plant Health Program Manager
503.881.0889 | Elizabeth.Savory@oda.oregon.gov



OREGON
DEPARTMENT OF
AGRICULTURE